



ANNUAL REPORT 2024 - 2025

Immaculate Conception Church
151 S. Washington Ave.
New Richmond, WI 54017
(715) 246-4652
www.icspcatholic.com

St. Patrick Catholic Church
1880 Cty. Rd G
New Richmond, WI 54017
www.icspcatholic.com

Fr. John C. Anderson
Pastor
(715) 246-4652 x226
icspchurches@ic-church.com

Jessica Jackson
Business Manager
(715) 246-4652 x225
j.jackson@ic-church.com

Laura Shepard
Financial Manager
(715) 246-4652 x224
l.shepard@ic-church.com

Arlene Tenner
Director of Catholic Formation
(715) 246-4652 x228
a.tenner@ic-church.com

St. Mary School
257 S. Washington Ave.
New Richmond, WI 54017
(715) 246-2469
www.st-marysschool.com

Jami Engelhart
Principal
(715) 246-2469 x249
jengelhart@st-marysschool.com

A LETTER FROM FR. JOHN

Dear Immaculate Conception & St. Patrick Catholic Communities and Friends,

I feel blessed to be your pastor and have the privilege to share with you the Annual Report for 2024-2025. This past year has been one of significant progress and positive change for our two churches and school. I am proud of what we have accomplished together!

This report highlights the new initiatives and improvements that have made our ICSP Catholic Communities and St. Mary School more vibrant and secure than ever before. You will see how we have focused on creating greater efficiencies to better serve you and a renewed commitment to safety to ensure a welcoming environment for everyone.

More importantly, this report is a testament to the remarkable growth of our church communities of which we have experienced. We have seen our families grow in number and in faith, and this growth is a direct result of our shared efforts to spread the good news of Christ. This is the heart of our mission of evangelization.

Thank you for your dedication, your service, and your unwavering support. I invite you to explore this report and consider how you can continue to be a part of our shared mission. With your partnership and God's grace, we will continue to grow as Catholic communities centered in Christ.

Blessed Virgin Mary and St. Patrick, our patron saints – *Pray for us!*

In Christ,
Fr. John Anderson - Pastor

Registered Families at Immaculate Conception	1389
Registered Families at St. Patrick	246
Baptisms	28
First Holy Communion	31
Confirmation	23
Adults Receiving Sacraments	5
Marriages	12
Deaths	39

** Sacrament and death numbers reflect totals between Immaculate Conception and St. Patrick*



IMMACULATE CONCEPTION FINANCES

Laura Shepard, Financial Manager

As the Financial Manager for Immaculate Conception and St. Patrick, I extend my sincere thanks to every parishioner for your valued financial commitment throughout the 2024–2025 fiscal year.

FISCAL YEAR 2024-2025 PERFORMANCE

The past year necessitated significant resource allocation to address both scheduled maintenance and a few required, unexpected capital updates. While some of this essential work has necessarily extended into the current fiscal period, the collective generosity of our ICSP Catholic Communities (ICSPCC) allowed us to successfully conclude the year with a positive Net Cash Flow. This positive balance affirms the fiscal health and stability of our combined parishes.

SUSTAINING OUR OPERATIONS AND MISSION

Your contributions are the critical funding mechanism that ensures the continuous, smooth, and effective operation of our parishes—from routine maintenance and utilities to staffing and the execution of our core ministries.

To preserve and build upon this momentum, I urge all parishioners to prayerfully review their current level of financial contribution. A modest increase in your offering is a direct investment in the long-term vitality of Immaculate Conception and St. Patrick, enabling us to responsibly steward our facilities and expand our outreach capabilities.

THE IMPORTANCE OF THE CATHOLIC SERVICES APPEAL (CSA)

We must highlight the necessity of the CSA Contribution. It is crucial to meet our individual parish goals because the rebate only applies to funds contributed after our target is fully met. If we fall short, none of the money contributed to the CSA is returned to us. These funds are integral, providing our parishes with crucial access to diocesan programs, training, and resources—often at discounted or no cost. Supporting the CSA strengthens the entire ICSPCC and directly benefits the ministries here in our own community.

METHODS OF FINANCIAL SUPPORT:

We offer several clear avenues for you to continue your support:

- Adult Giving (Regular offerings)
- Feast Day Giving
- Gifts to the Church (Special and capital donations)
- Contributions to the Endowment Fund (Future security)
- [CSA Contributions](#)

For your convenience, contributions are accepted during Mass, securely online via the ICSP website, by mail, or in person at the ICSP Business Office. Should you have any questions regarding these financial matters, please feel free to contact the ICSP Business Office.

WHERE DOES THE MONEY GO?

When contributions come into our parishes, they go directly into either the General checking account or to the TFT (Today for Tomorrow) savings account. They are then treated in one of three ways:

1. If the contribution is a general, “unrestricted” such as weekly adult, youth, and loose giving, then that money sits in the checking account until it is called upon to pay for an upcoming expense, such as payroll, heating, water, and other expenses. The average balance is low since money that comes in almost immediately goes out again.

2. If a contribution is made which is “restricted” to pay for a particular project or cause (such as a building remodel) then it gets deposited in a savings account which is “ear-marked” specifically for that purpose.

3. Investments are made when funds become available in either the checking or savings accounts. These investments are managed by outside agencies. Some investments come in as Endowments, those funds do not get spent, they stay invested, and we draw only off the interest.

Both the Council of Ministries and the Finance Council meet regularly to discuss and approve any major projects for the school and the churches. To learn more, please reach out to our business office, or any member of the Finance committee.



IMMACULATE CONCEPTION FINANCES

Laura Shepard, Financial Manager

IMMACULATE CONCEPTION ALL COST CENTERS FISCAL REPORT

July 2024 - June 2025

OPERATING INCOMES

Collections	\$	662,503.74
Tuition	\$	1,043,404.22
Fundraising	\$	145,781.16
Gifts	\$	15,911.12
Other	\$	126,330.63
Subsidy	\$	-

TOTAL INCOME \$ **1,993,930.87**

Financial Statements were prepared using a comprehensive method of accounting. Shared expenses paid by St. Patrick to Immaculate Conception were 25% of rectory expenses, 25% pastor's wages/benefits along with 13% of all other shared expenses for 2024/2025. Figures reflect the net amounts after St. Patrick has paid its percentage.

OPERATING EXPENSES

Wages/Benefits	\$	1,516,829.55
Pastoral/Liturgy	\$	28,237.87
Educational	\$	77,042.80
Technology	\$	39,363.10
Insurance	\$	31,163.40
Utilities	\$	57,269.66
Janitorial	\$	88,263.12
CSA PD by IC	\$	26,332.00
Fundraising	\$	43,252.91
Other	\$	64,719.36
Subsidy	\$	-

TOTAL EXPENSES \$ **1,972,473.77**
NET ADJUSTED BALANCE \$ **21,457.10**

IMMACULATE CONCEPTION BALANCE SHEET

July 2024 - June 2025

ASSETS

Current Assets - Unrestricted	\$	104,240.29
Current Assets - Restricted	\$	175,895.74
Today for Tomorrow - Restricted Funds	\$	994,614.97
Building Fund - Restricted Funds	\$	7,773.97
Endowments - Restricted Funds	\$	1,495,239.72
Investments - Restricted Funds	\$	1,048,105.49
Fixed Assets	\$	682,159.08

TOTAL ASSETS \$ **4,508,029.26**

LIABILITIES

Current Liabilities	\$	55,678.46
Long Term Liabilities	\$	-

TOTAL LIABILITIES \$ **55,678.46**

Net Assets at Period Beginning	\$	1,538,188.49
Prior Period Adjustments	\$	(250.00)
Increase in Net Assets	\$	2,914,412.31
Net Assets at Period End	\$	4,452,350.80

TOTAL LIABILITIES PLUS EQUITY \$ **4,508,029.26**

2024 - 2025 TITHE RECIPIENTS

Salvation Army- Grace Place Shop with a Cop	\$	2,101.37
American Haitian Foundation	\$	1,139.51
Five Loaves Food Pantry	\$	1,000.00
New Richmond Community Club Empty Bowls	\$	1,394.08
Options on 8	\$	477.10



ST. PATRICK FINANCES

Laura Shepard, Financial Manager

ST. PATRICK ALL COST CENTERS FISCAL REPORT

July 2024 - June 2025

OPERATING INCOMES

Collections	\$	140,089.20
Tuition	\$	87.00
Fundraising	\$	2,700.00
Gifts	\$	8,450.00
Other	\$	3,615.26
Subsidy	\$	-

TOTAL INCOME \$ **154,941.46**

OPERATING EXPENSES

Wages/Benefits	\$	66,964.40
Pastoral	\$	6,019.13
Educational	\$	5,188.15
Technology	\$	3,226.74
Insurance	\$	3,214.60
Utilities	\$	7,024.61
Janitorial	\$	22,855.46
CSA	\$	2,178.10
Fundraising	\$	-
Other	\$	6,480.72
Subsidy	\$	20,800.00

TOTAL EXPENSES \$ **143,951.91**

NET ADJUSTED BALANCE \$ **10,989.55**

ST. PATRICK BALANCE SHEET

July 2024 - June 2025

ASSETS

Current Assets - Unrestricted	\$	46,843.12
Current Assets - Restricted	\$	8,331.97
Today for Tomorrow - Unrestricted Funds	\$	57,831.45
Today for Tomorrow - Restricted Funds	\$	4,360.70
Building Fund - Restricted Funds	\$	682,706.49
Investments - Restricted Funds	\$	169,858.78
2025 Capital Campaign Redmodel Cost	\$	284,067.12
Prepaid Expenses	\$	698.43

TOTAL ASSETS \$ **1,254,698.06**

LIABILITIES

Current Liabilities	\$	184,155.21
Long Term Liabilities	\$	-

TOTAL LIABILITIES \$ **184,155.21**

Net Assets at Period Beginning	\$	162,581.14
Prior Period Adjustments	\$	-
Increase in Net Assets	\$	907,961.71
Net Assets at Period End	\$	1,070,542.85

TOTAL LIABILITIES PLUS EQUITY \$ **1,254,698.06**

2024 - 2025 TITHE RECIPIENTS

American Haitian Foundation \$ 1,400.00



ST. PATRICK FINANCES

Laura Shepard, Financial Manager

CAPITAL CAMPAIGN

as of June 20, 2025



St. Patrick's Catholic Church

BUILDING FAITH
BUILDING FUTURES

FINANCIAL COMMITMENTS

Campaign Financial Goal	\$	1,260,300
Total Financial Commitments Received	\$	1,076,155

BALANCE TO REACH FINANCIAL GOAL	\$	184,144
--	-----------	----------------

CONTRIBUTIONS/DEPOSITED FUNDS

Contributions received on financial commitments	\$	478,859
Memorials received	\$	11,363
Other contributions	\$	8,578
Planned financial commitments payments received	\$	342,696

TOTAL CONTRIBUTIONS RECEIVED	\$	841,496
-------------------------------------	-----------	----------------



CATHOLIC FORMATION

Arlene Tenner, Director of Catholic Formation

Bishop Powers' call to discipleship and evangelization is lived out in our Catholic Formation department as we provide opportunities for faith formation across all ages, from birth through natural death, at both Immaculate Conception and St. Patrick parishes. The bar graph on the next page highlights the variety of ministries, programs, experiences and events coordinated by Catholic Formation. While it does not capture the many one-on-one opportunities for spiritual growth, it does give a broad picture of the numerous offerings.



For our younger parishioners, Catholic Formation offers ministries for 3Y- 12th grade during the school year. Second graders prepare for the Sacraments of Reconciliation and First Holy Communion, while high school students are formed for Confirmation. Other highlights include Wednesday evening parish dinners, open to all, and St. Patrick's monthly family formation sessions. A theology of the body curriculum was implemented this past year to help our youth grow in the truth that we are made in the image and likeness of God. SEEKERS is a new faith journey group starting in November for 11th - 12th graders.

During the summer, Youth Catholic Formation provides additional opportunities: Totus Tuus (1st-12th grades), Catholic Heart Work Camp (9th-12th Grades), Vacation Bible School (pre-K - 5th grades), and Extreme Faith Camp (6th-12th grades). Throughout the year, several events bring joy to our community and strengthen faith and fellowship to weave our parishes together in community and faith. These include Box of Joy, High School Discipleship Weekend, the Thanksgiving meal drive, Keep Christ in Christmas, Fat Tuesday Mardi Gras, the Christmas Fair, The Hometown Holiday Parade, March 4 Life, Knights of Columbus Fish Frys, and Adopt a Highway cleanup. Some of these events are made possible because of interparish collaboration. We are blessed and grateful to be able to offer so many events; some of these partnerships continue to foster friendships with other kids within the diocese.



There has been growth in both the number of adult formation opportunities offered as well as growth in the number participating. Opportunities include In Christ Women's Group, REIGNITE Men's Group, and seasonal formation series led by parish leaders such as Deacon Mel, Deacon Mike, and other presenters. Many of these programs thrive because of the dedication of parishioners who step forward to lead and participate.



CATHOLIC FORMATION

Arlene Tenner, Director of Catholic Formation

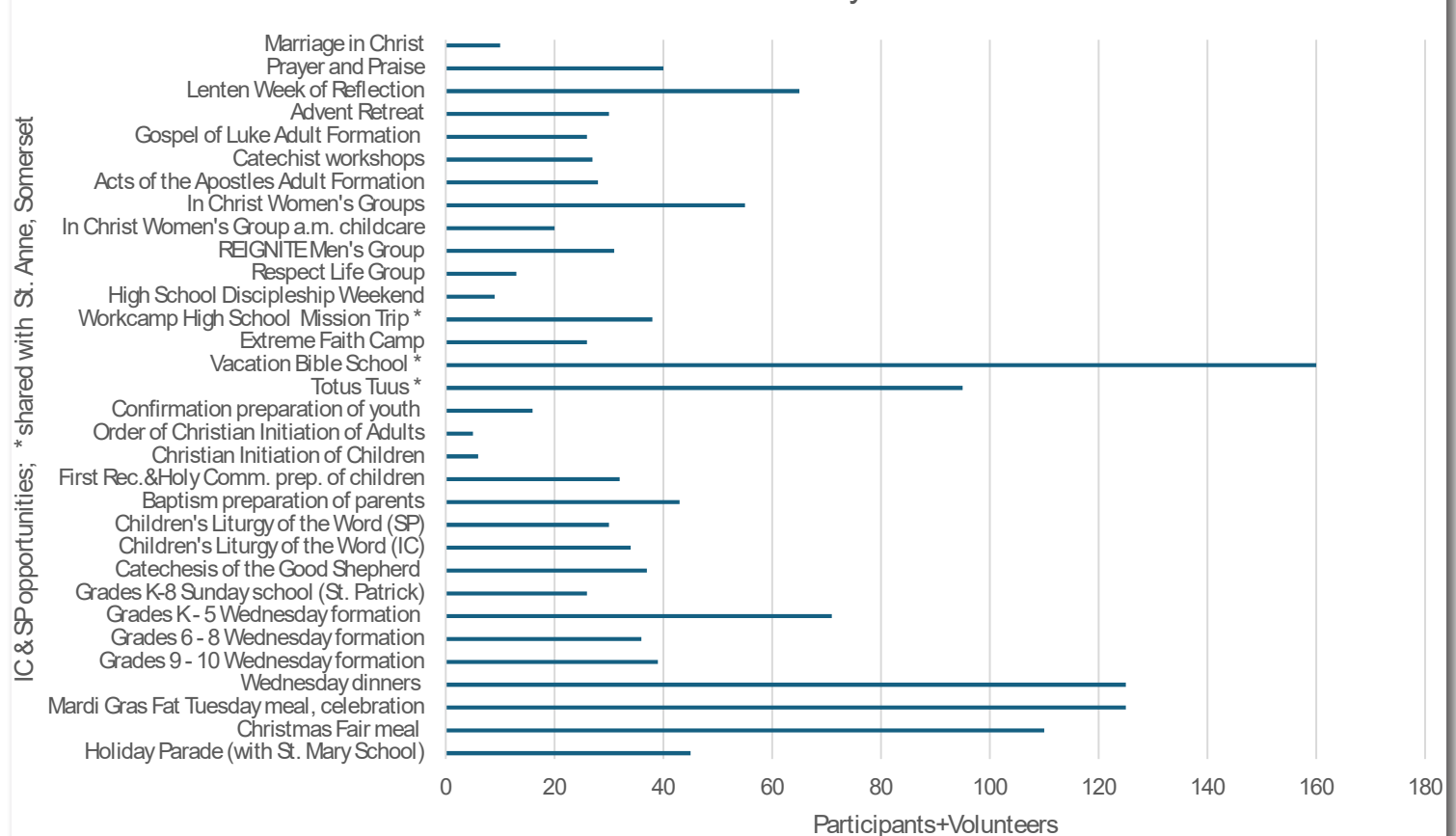
An emphasis in each parish's youth formation curriculum will be family engagement activities which includes the continuation of the monthly St. Patrick's Sunday morning family formation events and the introduction of some Wednesday evening family formation events in the K - 5 classrooms. These and Adult Catholic Formation experiences are being offered to help prioritize faith within the family.



All of these ministries depend on dedicated staff, volunteers, and resources. Growth is already evident as more parishioners step forward to share their gifts in everything from Catechesis of the Good Shepherd to adult formation. While Catholic Formation currently operates with two full-time staff members and two part-time staff members, the increasing scope of ministry calls for continued support from parishioners who generously give their time, talent, and treasure.

Fundraising also plays a vital role in sustaining youth ministry experiences. Events such as Fat Tuesday Mardi Gras, scone and chili sales, and the annual garage sale make these programs possible. We are profoundly grateful for the participants, donors, and volunteers whose support keeps Catholic Formation thriving and ensures our parishes remain alive with faith and evangelization.

Catholic Formation Involvement July 2024-June 2025



STEWARDSHIP

Terry Palmer, Stewardship Committee Chair

TIME + TALENT + TREASURE



All of us thank God for our gifts a couple of times a day. Stewardship is the responsible and careful management of something entrusted to one's care. The concept applies to various domains, including the environment, finances, information, and the community, emphasizing the accountable and ethical use of resources for long-term well-being. In a religious context, it involves recognizing a higher power as the giver of all gifts and managing these gifts (talents, resources, time) with generosity and gratitude to serve God and neighbor.

We reach out to you today with a deep sense of gratitude and a heartfelt invitation. As a community, we are called to be good stewards of the gifts we have been given. This means more than just managing our resources; it's about tending to our shared home and nurturing the ministries that serve our community. It's about recognizing that everything we have is a gift and that we have a responsibility to use these gifts to do good.



Your generosity has always been a beacon of hope, allowing us to maintain our beautiful grounds, keep the lights on, and continue our essential programs. This year, we face new challenges and have new opportunities to grow our outreach. We are a vibrant community, and our needs reflect our desire to do more, to serve more, and to be more for one another. Your support helps us provide essential services, expand our educational programs, and ensure safety to everyone who seeks a place of peace and connection.



Please prayerfully consider how you can contribute to our Stewardship Appeal this coming year. Your gift, no matter the size, is a powerful act of faith and a testament to our shared commitment. Together, we can continue to be a light in our community, fostering a place where everyone feels welcome and supported. When was the last time you gave your church a raise? May the Holy Spirit guide you in determining the amount.

Bless us, O Lord, and these Thy gifts, which we are about to receive from Thy bounty, through Christ our Lord. Amen

***Are you interested in joining a fund-raising committee that focuses of social events?
If so contact Terry Palmer at stewardship@icspcatholic.com***



EVANGELIZATION

Kim Palmer & Deacon Mel Riel, Evangelization Steering Committee Co-Chairs



We, as Catholics, understand Evangelization as being "called by God to be Disciples" not only in words but also in works so as to be a beacon or a model through which others may be encouraged to do the same. The Bible shows us how the Apostles and Disciples Evangelized. First, they grew in their own faith by absorbing all that Jesus taught them. Then two by two they were sent to share this faith with others. The Diocese of Superior is calling us back to these very roots. Immaculate Conception and St. Patrick have embraced this vision, to grow in our faith and lead others to Christ.

Over the past year the Evangelization Steering Committee has been working on bringing this vision forth to the parishioners.

2024-2025

An Evangelization Ministry was formed, leading to an Evangelization Steering Committee to guide ministries through the process of going from maintenance mode and working towards helping our parishioners become missionary disciples. Over the past year the Evangelization Steering Committee has:

- Created a pamphlet explaining what it means to be a Missionary Disciple.
- Assessed the old IC and SP websites recommending improvements in accessibility, consistency, single-point management, and the addition of online event registration/payment. A Webmaster was subsequently hired based on this assessment.
- Provided content to the ICSP Catholic Communities Webmaster, to have all progress and important information published for all parishioners and the public. The content included Bishop's letter and Pastoral plan, ICSP strategic ministry plan, Maintenance to Mission pamphlet, and a link to the Diocese of Superior Evangelization webpage.
- Established workgroups to work with each current ministry at both Immaculate Conception and St. Patrick. The purpose of the workgroups is to evaluate each ministry and help them to decide what is going well and how to enhance or to eliminate what is not doing well in their ministry with specific regard to Evangelization.
- Supported faith enrichment such as 30@3 Lenten prayer card, Marriage in Christ seminar, monthly Adoration, Worship and Witness evenings and so much more!

2025-2026

Over the next year the Evangelization Steering Committee will focus on providing opportunities that will invite you into a deeper and richer faith life. Please continue to watch all of our ICSP Catholic Communities website, bulletin and social media for these opportunities. If you have any suggestions or would like more information, please feel free to contact the ICSP Church Office or one of the Evangelization Steering Committee members. Thank you and God Bless!

ICSP CHURCH OFFICE

715-246-4652

EVANGELIZATION STEERING COMMITTEE

evangelization@icspcatholic.com

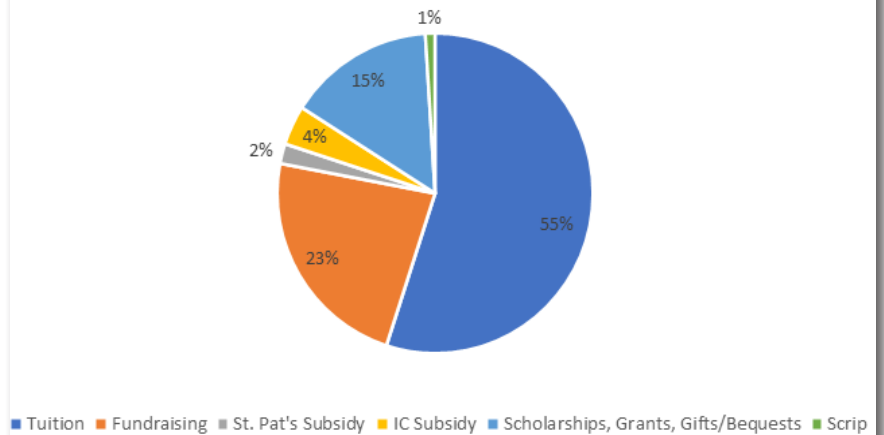


ST. MARY SCHOOL

Jami Engelhart, Principal

During the 2024-2025 school year, tuition at St. Mary School was set at \$3,700 per student. In July, the actual cost to educate each child at St. Mary School was calculated to be \$6,585.31. To keep tuition affordable, the school receives generous donations from various donors who support our Tuition Assistance and Scholarship program, as well as contributions from our three main annual fundraisers. Additionally, we receive support from two wonderful parishes that aid our school. Thanks to these contributions, St. Mary School can maintain lower tuition costs and make Catholic education accessible to all families who wish to enroll their children.

Cost to Educate a Student at SMS for the 2024-2025 School Year was \$6,585.31 Per Student



The 8th graders from St. Mary School celebrated their graduation with a trip to Madeline Island by attending Mass at St. Joseph Church, a pilgrimage site for the Jubilee year.



The 2nd graders posed for a picture for the front cover of their class cookbook, which was created as a project for a silent auction GALA item.



St. Mary School has reintroduced boys' basketball this past winter and plans to continue the team for the upcoming season!



ST. MARY SCHOOL

Jami Engelhart, Principal



Congratulations to our 2nd grade students who celebrated the sacrament of First Communion this past spring!

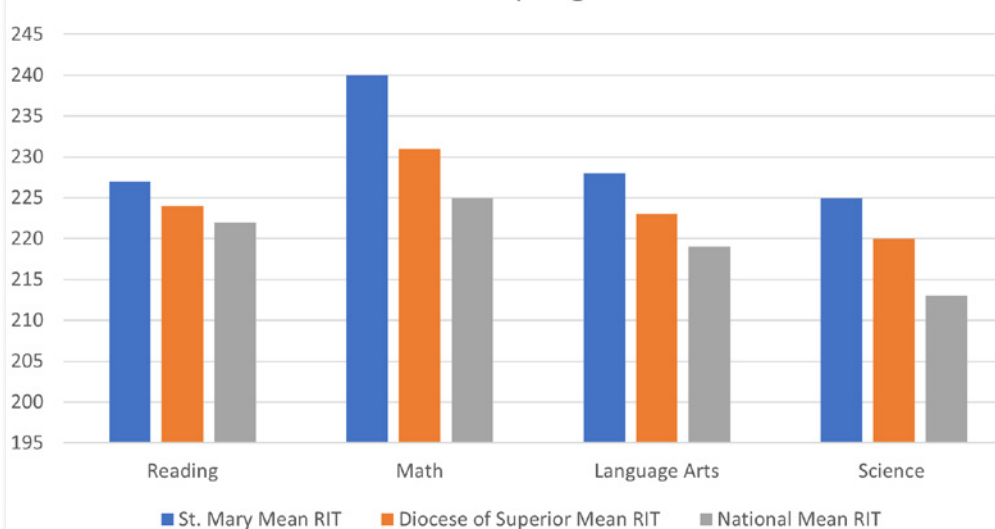


SMS middle schoolers enjoyed their fall retreat at Camp Wapo! Students came together not only through team-building activities but also in discovering who they are as sons and daughters of God!



Congratulations to the 2025-2026 student council representatives! They have been actively serving dinner on Catholic Formation nights, playing BINGO with the residents of Deerfield, assisting with various projects at Grace Place, ringing bells in December for the Salvation Army, and much more.

8th Grade 2025 Spring MAP Scores



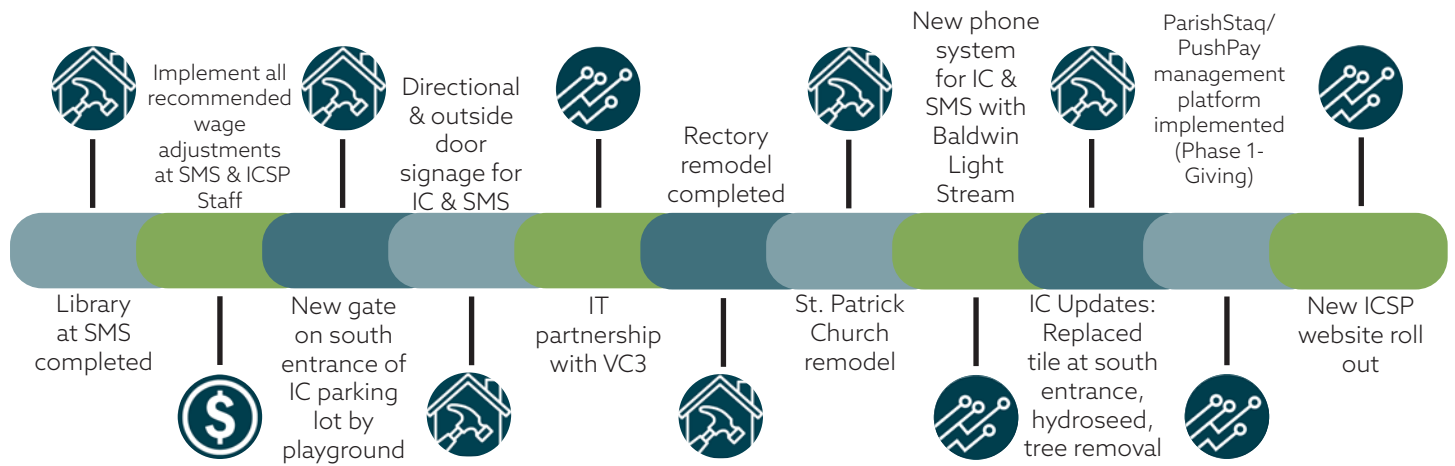
Students in grades K-8th take the national standardized test known as MAP. This test measures a student's academic growth in reading, math, language usage, and science over time. The bar graph shows our 8th graders from the 2024-2025 school year being above the Diocese and National averages. These scores indicate that we have dedicated teachers, staff, and parents with high expectations for our students.



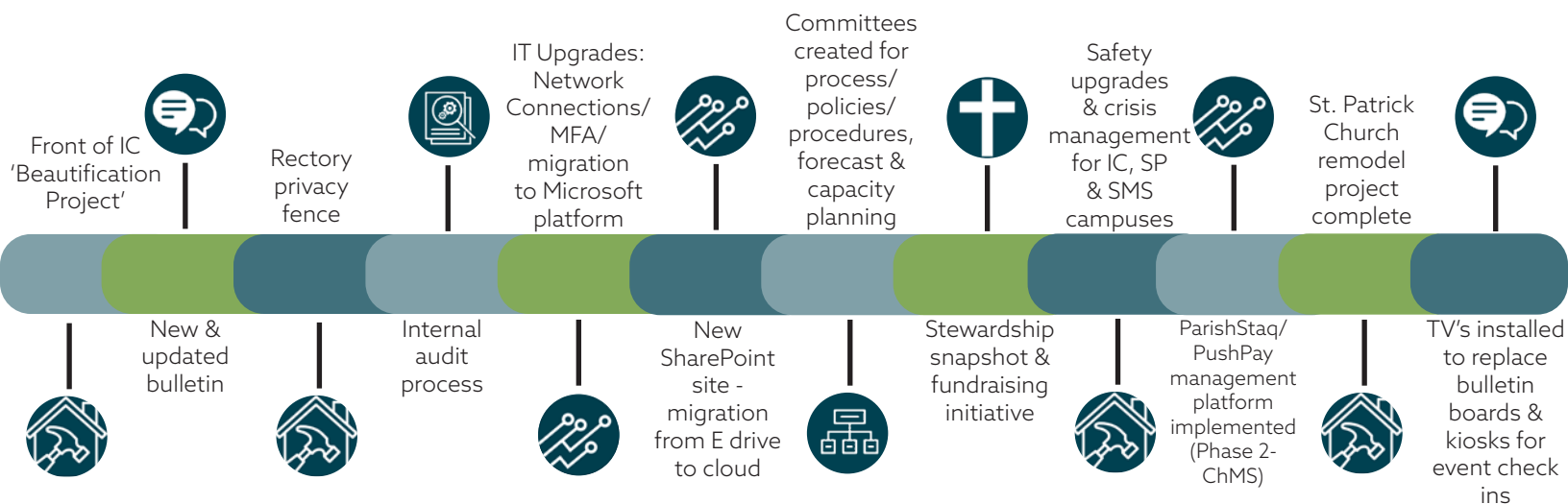
YEAR IN REVIEW & LOOKING FORWARD

Jessica Jackson, Business Manager

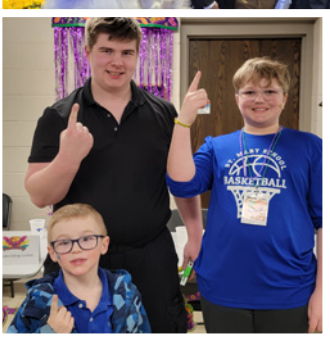
2024-2025



FUTURE GOALS



HIGHLIGHTS FROM 2024 - 2025



ENDOWMENTS

You Are Remembered!

IMMACULATE CONCEPTION

Orville & Francis Anderson Estate
Anonymous Donors
John & Marianne Ball
Fred & Ruth Ball Family
Catherine Barrett
David J. & Beverly R. Bibeau Family
Fr. James Brinkman
Frank Casey Estate
Patrick & Kathy Cody
Jim & Arliss Cody
William & Mary Ann Derrick Family
Elmer & Elena Dittman
Tom & Patty Doar
John Doar
William Driscoll—Annuitant
Curtis Flatten Estate
Rosella Freiermuth Estate
Gardner Estate
Ann Ulrich - Germain

Deacon Michael J & JoAnn Germain
Phyllis Jayne Gibson Estate
Marietta Hagan
Mary Hayes Estate
John & Patricia Heintz Estate
John & Robert Heywood
Anne Hughes Estate
IC Women's Club
James Jarchow Family
Mary Elinore Jenkins
Mabel Johnson Estate
Mr./Mrs. Robert Krueger
Thomas L'Allier Family
Duane & Mildred Lais
Bernie Layman
Marjorie Lentsch Estate
Lillian Lowe
Charlotte Lynch Estate
Marilyn McCarty Estate

Mary McDermott
John D. & Paula J Meisner
Kent & Kevin Mickelson
Dorothy Mickelson
Anna Mondor
Gertrude Mullen—Annuitant
Margaret Murray
Marie & Norbert Nilsson
James & Judith Remington
Rita Riley—Annuitant
Christine Schmit
Delia Simon
Betty Sindelar
Jesse & Theresa Skramstad
Connie Stacken—Annuitant
Anna Stephens
Grace Walsh
Lawrence R. & Mary L. Weisenbeck Family
Lawrence R. & Mary L. Weisenbeck

ST. MARY SCHOOL

Anonymous Donors
John & Marianne Ball
Catherine Barrett
Anne Marie Bernd
Joseph Beuning
Edmund & Eleanor Brown
Mr./Mrs. Joe Casey
William & Mary Ann Derrick Family
Edward Donahue
Fr. Leonard Fraher
Hugh Gillen
Anthony Hecht
Deacon Doc Hugh Mayer Family
Immaculate Conception Parish - Grantsburg
Mabel Johnson Estate
Margaret Keating
NR Knights of Columbus
Bernice LaVenture

Lowe Family
Donald J. (Jim) Martin
Ruth McCabe
Helen McNally
Miles McNally
Anne M. Meath
Lorraine Morgan
John & Bernadine Mortensen
Mr./Mrs. John Murray
Marie & Norbert Nilsson
Kathryn Pederson
Robert Emmett Schmit
Wayne Sias
John & Sharon Sias
St. Anthony of Padua Parish - Lac du Flambeau
St. Dominic Parish - Frederic
St Mary's Hero Campaign
Richard Stefonek—Annuitant

Timothy & Mary Sullivan
Paul Swenby
Grace Walsh
Patricia Sullivan Watkins
Lawrence & Teresa Zimmerman

CATHOLIC FORMATION

Lee Feneis—Annuitant
NR Knights of Columbus
Jerry Backes Family

	Immaculate Conception	Catholic Formation	St. Mary School
Principal Balance 06/30/2024	\$ 973,119.77	\$173,061.68	\$220,313.16
Donations 2024/2025	\$ 4,500.00	\$-	\$5,400.00
Earnings Disbursed	\$ -	\$-	\$-
Gain on Investment	\$ 86,429.41	\$14,135.62	\$18,280.08
6/30/2025 Balance	\$ 1,064,049.18	\$187,197.30	\$243,993.24

ESTATE PLANNING Remember the church when you are drawing up your wills and planning how to best serve your families. When a person leaves part of their estate to the church with no restrictions, 20% is designated to the Church Endowment Fund so that the person will be remembered forever. The remaining 80% is used for the special needs of the church.

Part of our church's endowment policy planning is the use of annuities. A portion of the endowment investments is held in annuities. Parishioners allow the church to purchase an annuity in their name. A known amount of money can be pulled from the annuity, which helps us in the budgeting process. Upon the annuitant's death, the entire principle comes back to the church.

THANK YOU to the annuitants of our endowment funds!